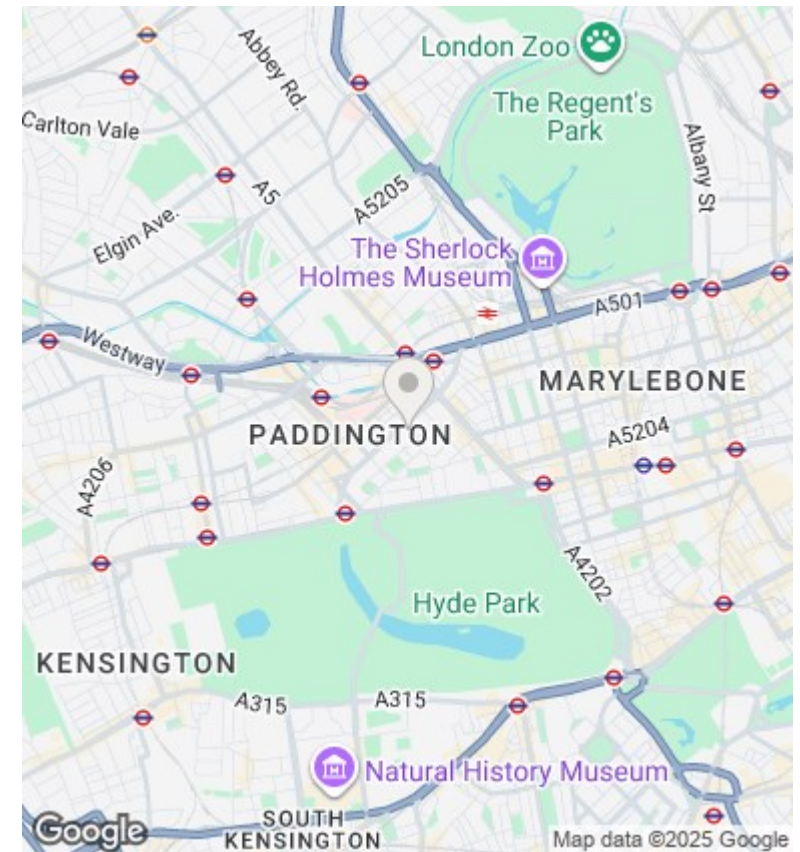
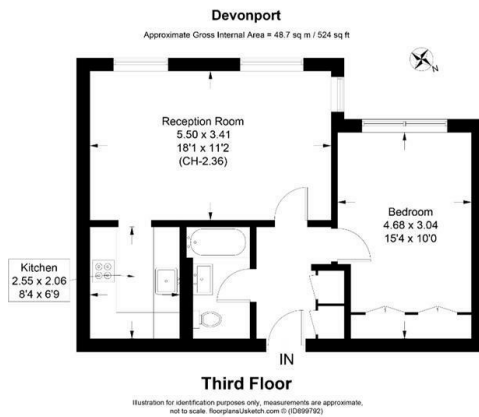




Devonport, Randor Place, London W2

Asking Price £595,000

- Spacious and Well Proportioned One Bedroom Flat
- Modern Kitchen
- Communal Garden
- Close to Hyde Park, Edgware Road and Oxford Street
- Share of Freehold
- Two Lift Access
- Bright with nice South West views
- Newly Refurbished
- Porter and Disabled access
- Close to Paddington and Edgware Road stations



Directions

Viewings

Viewings by arrangement only. Call 02070990800 to make an appointment.

Council Tax Band

G

EPC Rating:

E

Energy Efficiency Rating		
	Current	Potential
<i>Very energy efficient - lower running costs</i>		
(92 plus) A		
(81-91) B		
(69-80) C		70
(55-68) D		
(39-54) E	50	
(21-38) F		
(1-20) G		
<i>Not energy efficient - higher running costs</i>		
England & Wales	EU Directive 2002/91/EC	